

Fur industry



At scansteel foodtech our strategy is to maintain and continuously develop our close business relationship with our customers and to sustain our on-going product development in delivering superior machinery- and equipment for the global fur industry.

Our product portfolio comprises, among others:

Whole pallet crushers/Breakers, Grinders, Mixers, Homogenizers, Feed pumps as well as complete production lines.

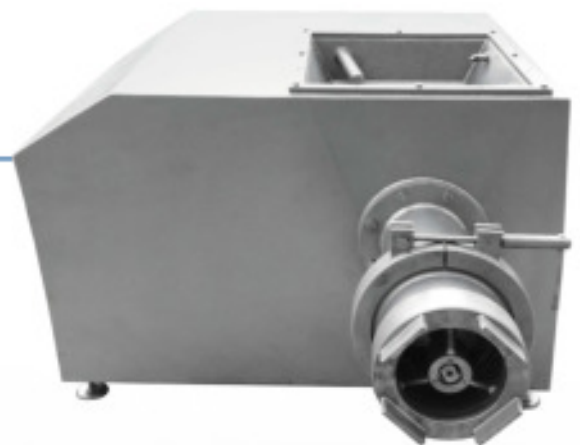
GRINDER SERIES

- Constructed in stainless steel
- Grinders from $\varnothing 250$ mm to $\varnothing 550$ mm
- Grinding capacities from 2000 to 40,000 kg/hr
- Optional scansteel knife tensioning system, hydraulic
- Large hopper in feed area preventing bridge building
- Low noise Level
- Low energy consumption
- 75 - 160 kW motor
- 1 or 2 units dismantling crane
- Heavy Duty construction



HOMOGENIZERS

- Constructed in stainless steel
- Two models, $\varnothing 250$ mm & $\varnothing 300$ mm
- 75 kW - 110 kW motors
- Optional scansteel knife tensioning system, hydraulic



MIXERS

- Constructed in stainless steel
- Single shaft - Paddle/spiral types
- Mixers sizes from 5000 - 15.000 Litres
- Optional "bomb" discharge gate for discharging into, example only, homogenzier





WHOLE PALLET CRUSHERS/BREAKERS

WPC 1500-Single, WPC 1500-Twin
WPC 2000-Single, WPC 2000-Twin

- Constructed in stainless steel
- In feed hopper and discharge frame/hopper manufactured according to customer needs/demands
- Crusher claws made of stainless steel and/or hardened material
- Designed with few spare- and wear parts leading to very low cost of operation and maintenance of the machine
- Frozen block dimensions: 1000 x 1000 x 1000 mm.
- WPC 1500-Single, 10.000 - 20.000 kg/hour (22.000 - 44.000 lbs/hr.) Power/motor 45-75 kW
- WPC 1500-Twin, 20.000 - 60.000 kg/hour (44.000 - 130.000 lbs/hr.) Power/motor 2 x 55 - 2 x 110 kW
- WPC 2000-Single, 10.000- 20.000 kg/hour (22.000 - 44.000 lbs/hr.) Power/motor 75 kW
- WPC 2000-Twin, 20.000 - 60.000 kg/hour (44.000 - 130.000 lbs/hr.) Power/motor 2 x 75 - 2 x 110 kW



SUPER PUMP SERIES SP200, SP250, SP290

- Constructed in stainless steel
- Three types, SP 200, SP 250 and SP 290
- Infeed hopper designed according to customer requirements
- 11 -75 kW motors

scansteel foodtech
MADE IN DENMARK